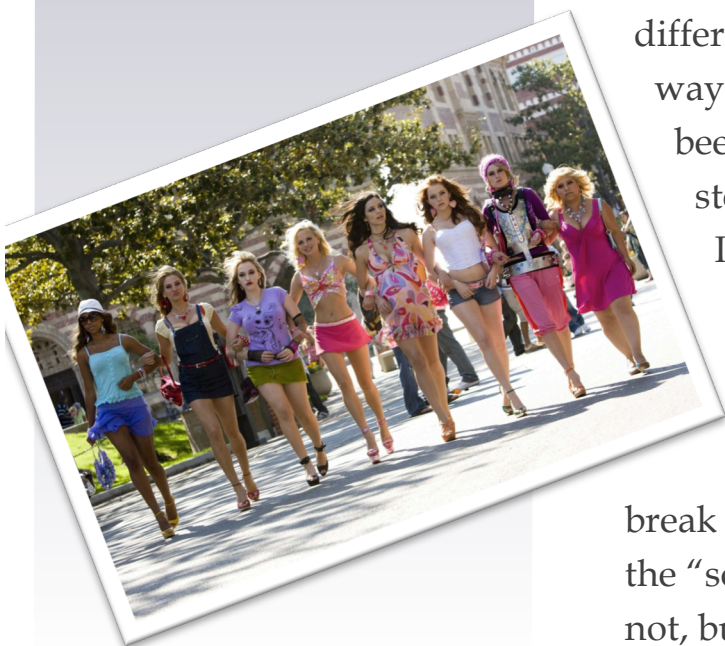
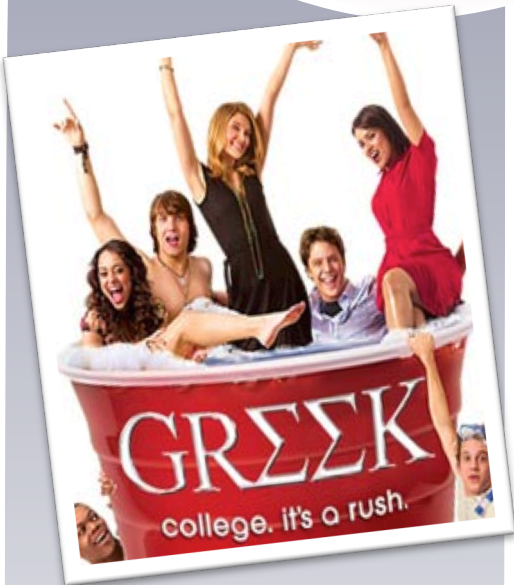


F A L L 2 0 1 4

# βΕΥΟΗΔ ΤΗΕ ΙΕΤΤΕΓΣ

## Gone Greek.

Beyond The Letters is a campaign to show that there is another side to being apart of Greek life. Girls who join Greek life are categorized in many different ways. Most of the time it is in a negative way with never-ending stereotypes. We've all been familiarized with them. Some of these stereotypes are true, while many of them aren't. It is to show that being apart of a sorority is not being apart of just one house, but a whole organization. It is to exhibit that letters do not define a person, but a person defines those letters. We want to know, hear, and break the stereotypes of Greek life. Can we crush the "sororstitute" and "frat boy" images? Maybe not, but we are going to try.



#BEYONDTHELETTERS



We want to know what being apart of Greek life means to you. Hashtag us on Twitter and Instagram!

# Break The Stereotype

What is a sorority girl?

When people think of being apart of Greek life, “a bunch of drunk idiots” is usually the first thing that comes to mind. Pearls, sundresses, caked on makeup, slutty, stuck up, rich kids, and the list goes on and on. Going to a school where the Greek community is so large exaggerates these stereotypes even more at times. From the outside looking in, it is hard for people to understand something they cannot identify with. Being apart of Panhellenic is a lot more than “paying for a group of friends,” much more than socializing, and a great deal more than partying all of the time. When I think of a sorority house, I think of walking through the doors into the kitchen to see a bunch of girls eating together talking about what’s going on in their life at the moment, then going up to the attic to see even more girls buried in textbooks. I think of all of the different personalities that some how all fit together to make up one chapter. Then I think of what goes on behind all of that. Behind the letters and going out, are normal beautiful, people. At

the end of the day, people in Greek life are normal students. It is not about having thousands of friends, but about getting involved to better yourself. Many people have different views, and we want to address each of them. So that is exactly what we are going to do.

## How Are We Going To Do This?

We need your help! We want to know what you think of Greek life. We will be addressing kids on campus and interviewing them to hear exactly what their thoughts on it are. We will also hear from people who are apart of Panhellenic. This is to break the myths, and show the true story.

